

Vinyl Insulated Locking Spade Terminals with Copper Support Sleeve

2216 AWG Vinyl Insulated Locking Spade with Copper Support Sleeve

Material: Tin Plated Copper with Butted Seam

Insulation Material: Red Vinyl with Funnel Entry Copper Support Sleeve

Maximum Electrical Current: 19 Amps

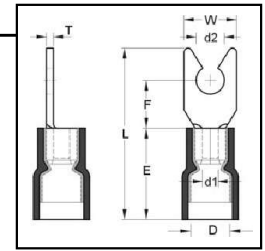
Barrel ID (d1): .067

Maximum Electrical Rating: 75°C, 600V

Max Insulation (D): .165

Material Thickness: .030

Barrel Length (E): .189



HOFFMAN PART NO.	STUD SIZE	DIMENSIONS (INCHES)					UL	TAPE MOUNTED REEL QTY	DIE FOR TAPE MOUNTED	HAND TOOL
		STUD DIAMETER	TONGUE WIDTH	STUD CLEARANCE	LENGTH					
		d2	W	F	L					
FVD22163LST	6	0.146	0.252	0.256	0.846	Y	1000	3V2216D	YNM2210D	
FVD22164LST	8	0.169	0.319	0.256	0.846	Y	1000	3V2216D	or	
FVD22165LST	10	0.209	0.319	0.256	0.846	Y	1000	3V2216D	IZUMI # 34	

1614 AWG Vinyl Insulated Locking Spade with Copper Support Sleeve

Material: Tin Plated Copper with Butted Seam

Insulation Material: Blue Vinyl with Funnel Entry Copper Support Sleeve

Maximum Electrical Current: 27 Amps

Barrel ID (d1): 0.09

Maximum Electrical Rating: 75°C, 600V

Max Insulation (D): 0.197

Material Thickness: 0.031

Barrel Length (E): .189

HOFFMAN PART NO.	STUD SIZE	DIMENSIONS (INCHES)					UL	TAPE MOUNTED REEL QTY	DIE FOR TAPE MOUNTED	HAND TOOL
		STUD DIAMETER	TONGUE WIDTH	STUD CLEARANCE	LENGTH					
		d2	W	F	L					
FVD16143LST	6	0.146	0.236	0.256	0.846	Y	1000	3V1613D	YNM2210D	
FVD16144LST	8	0.169	0.319	0.256	0.846	Y	1000	3V1613D	or	
FVD16145LST	10	0.209	0.319	0.256	0.846	Y	1000	3V1613D	Izumi # 34	

1210 AWG Vinyl Insulated Locking Spade with Copper Support Sleeve

Material: Tin Plated Copper with Butted Seam

Insulation Material: Yellow Vinyl with Funnel Entry Copper Support Sleeve

Maximum Electrical Current: 48 Amps

Barrel ID (d1): .134

Maximum Electrical Rating: 75°C, 600V

Max Insulation (D): .276

Material Thickness: .039

Barrel Length (E): .512

HOFFMAN PART NO.	STUD SIZE	DIMENSIONS (INCHES)					UL	TAPE MOUNTED REEL QTY	DIE FOR TAPE MOUNTED	HAND TOOL
		STUD DIAMETER	TONGUE WIDTH	STUD CLEARANCE	LENGTH					
		d2	W	F	L					
FVD12103LST	6	0.146	.327	.276	1.012	Y	500	3V1210D	YNM2210D	
FVD12104LST	8	0.169	.327	.276	1.012	Y	500	3V1210D	or	
FVD12105LST	10	0.209	.354	.276	1.012	Y	500	3V1210D	Izumi #5	

